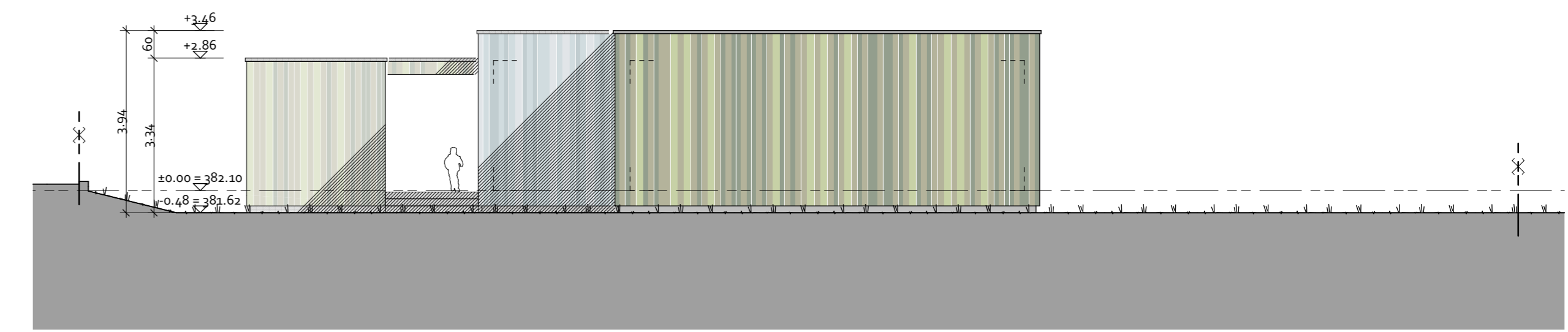
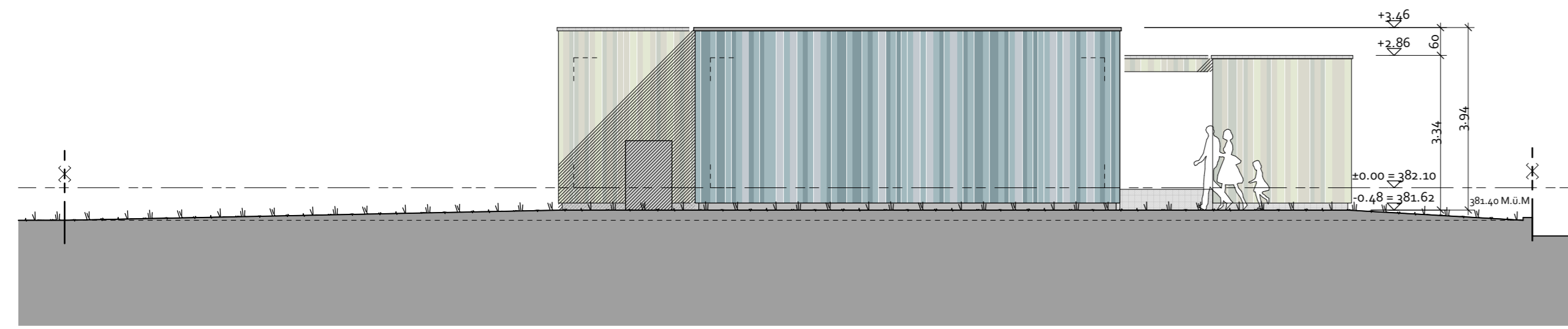


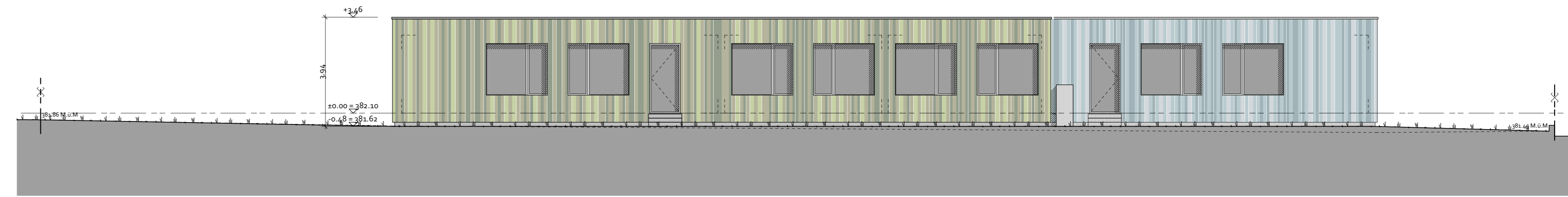
Westfassade



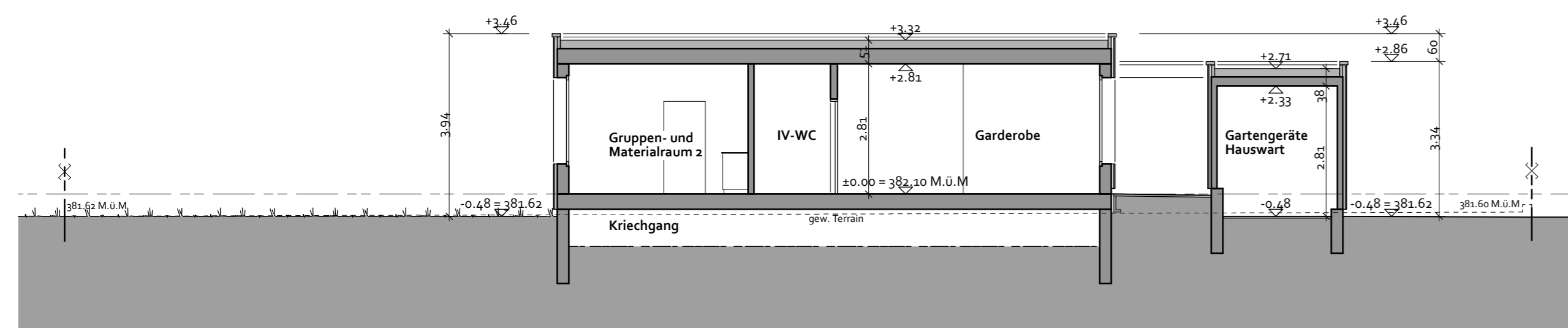
Südfassade



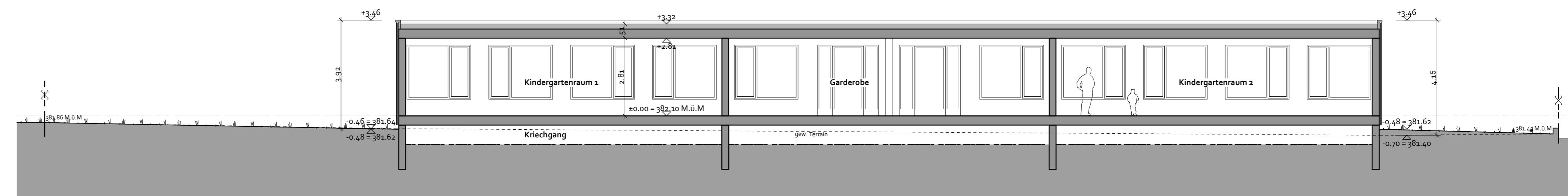
Nordfassade



Ostfassade



Querschnitt

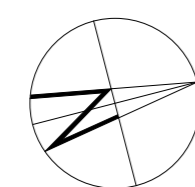


Längsschnitt

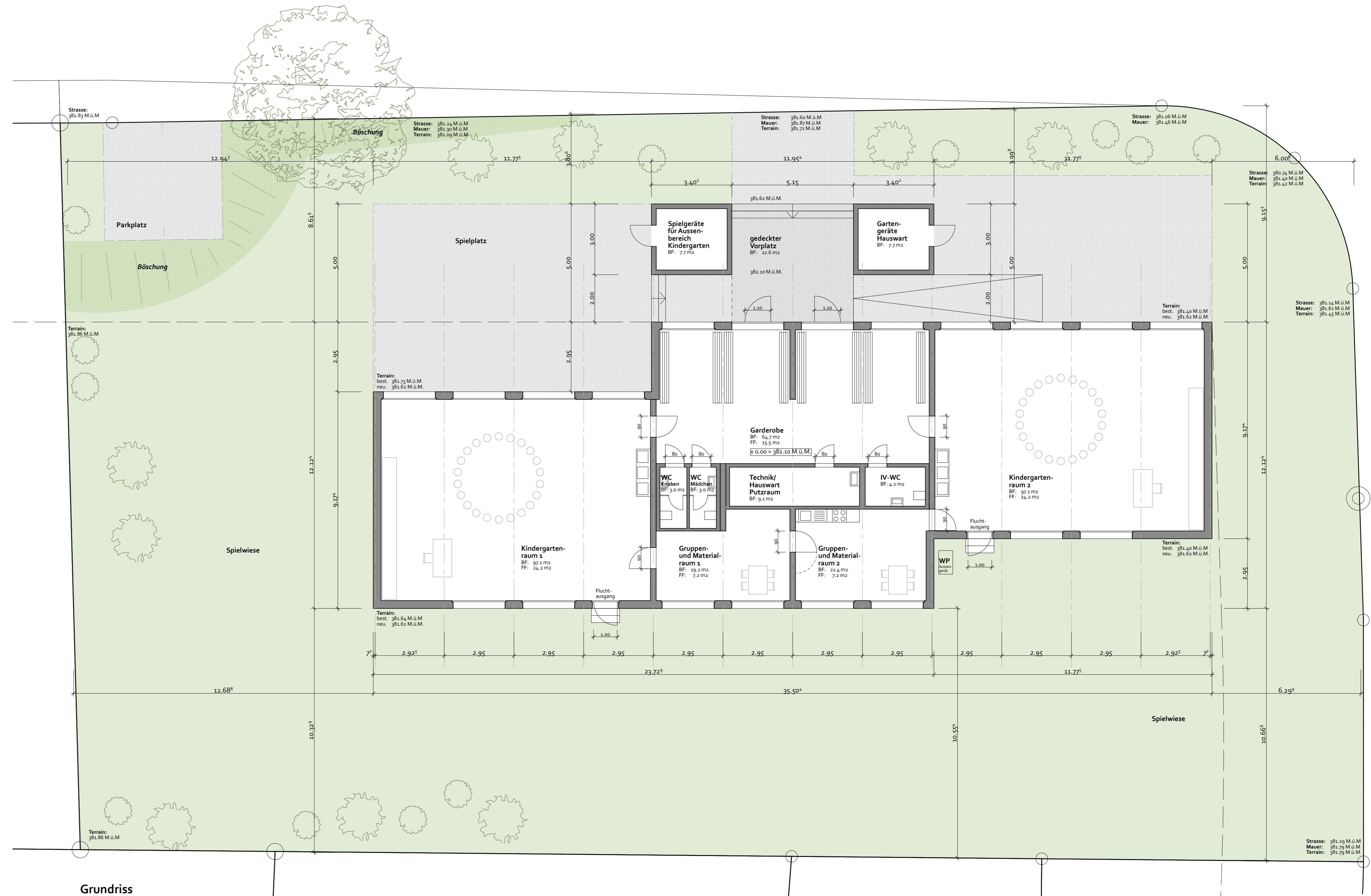


Schwarzplan 1:1000

Ort / Datum:
 Bauherrschaft:
 Grundeigentümer:
 Architekten:



Objekt: Neubau Doppelkindergarten Bahnhof- Mettlenquartier, Eglishau
 Bauherrschaft: Schule Eglishau, Obeggass 61, 8193 Eglishau
 Plan Nr. 067/101
 Plan Grösse: 94x68
 Zeichnungsstabs: 1:100
 Datum/ Gez. 17.08.2020/ SR
 Revidiert/ Gez.
BAUGESUCH Grundriss, Fassaden und Schnitte
 ARCHITECTEN
RUDER LOCHER GMBH
 Ruder-Locher Architekten GmbH
 Baurenzelgstrasse 20
 CH-8193 Eglishau
 Tel. 044 886 60 00
 info@ruder-locher.ch
 www.ruder-locher.ch



Grundriss